

Pete Parkinson, AICP

APA California, Chapter President

Sonoma County Planning Director (retired)

Disaster Survivor Stories: As Real as it Gets

Bay Area Planning Directors Association
November 2, 2018

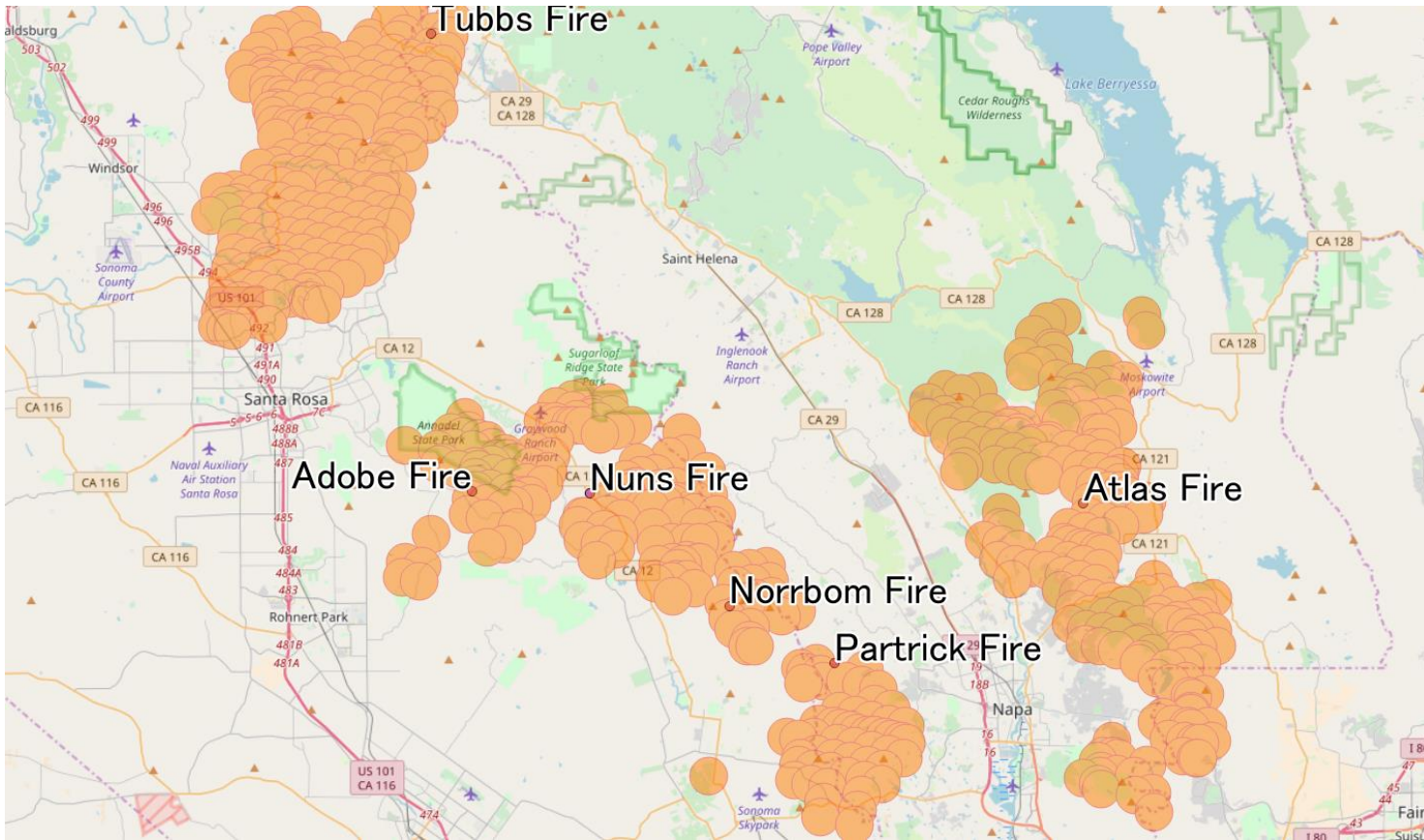
35 Years of Planning for and Responding to Disasters

- The “Safety Element” in the General Plan
- Local Hazard Mitigation Plans
- Hazard reports for development projects
- Floods
- Landslides
- Earthquakes



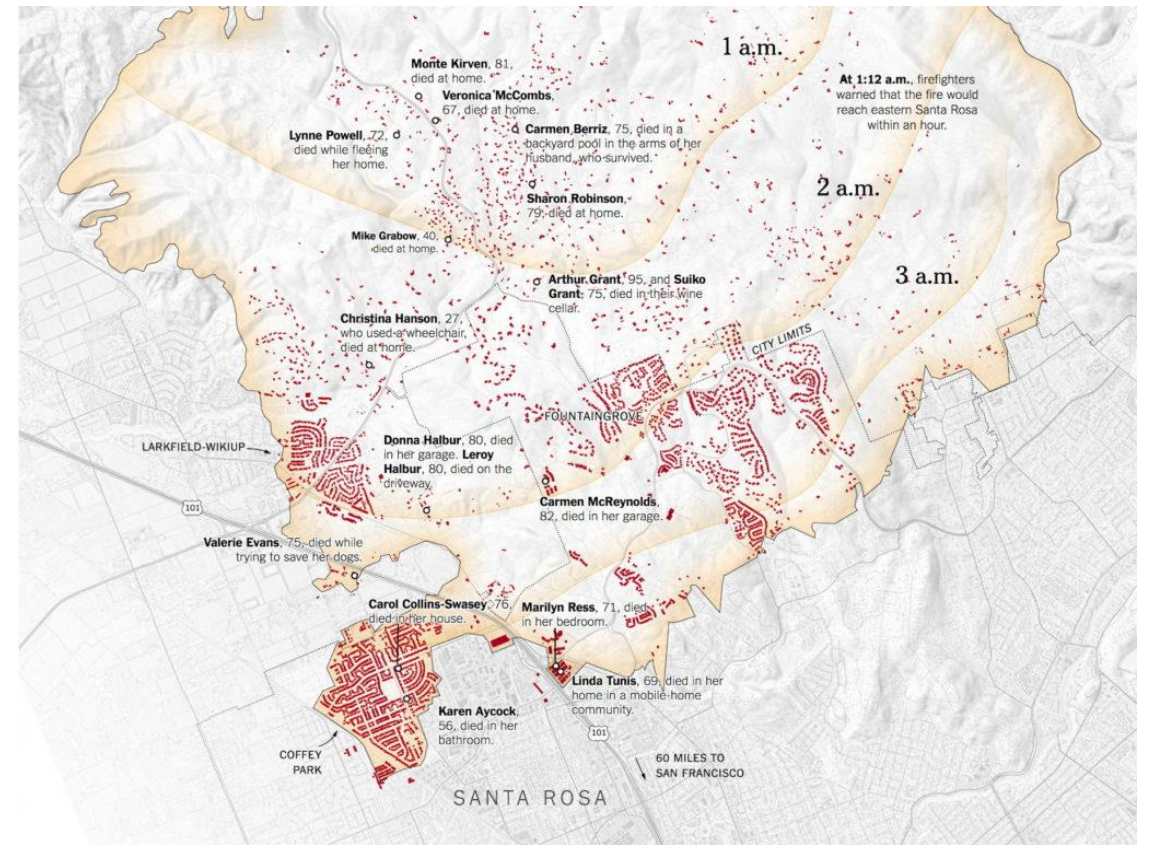
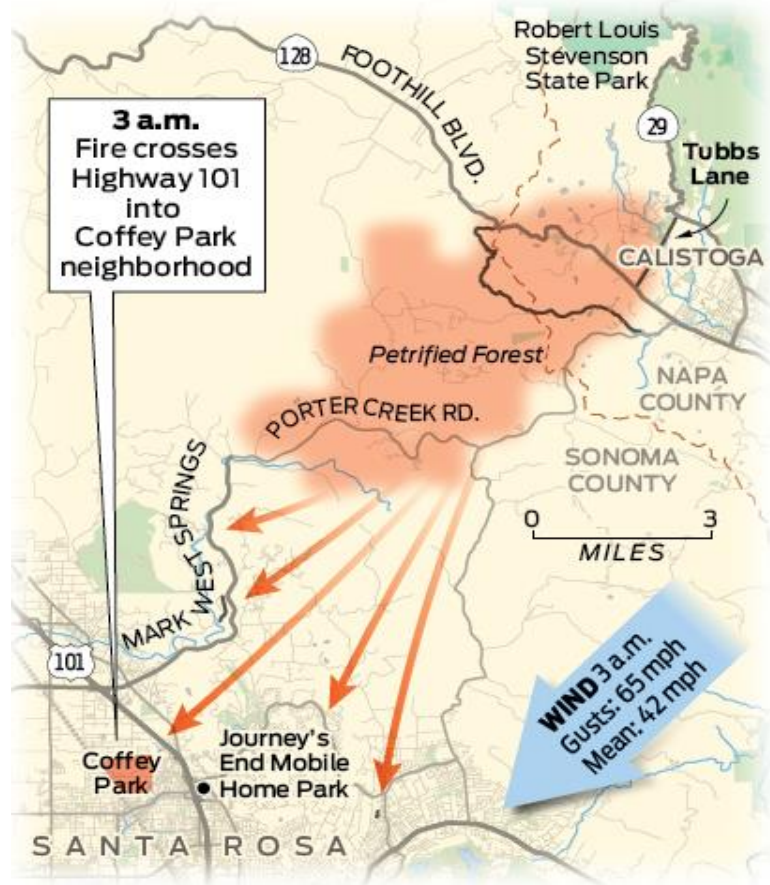
Trouble on the Horizon





- Dozens of fires
- 9-1-1 System overwhelmed
- Mutual Aid Capacity exhausted
- Confusion everywhere

What We Didn't Realize ...



Twelve Miles in Four Hours



Fountaingrove: 1,400 homes destroyed



Coffey Park: 1,400 homes destroyed

Community Landmarks Gone





It Got Personal

By the numbers ...

Over 5,300 Homes Destroyed in Sonoma County

23 Deaths

\$10 billion in insurance claims filed

2,000,000 tons of debris removed

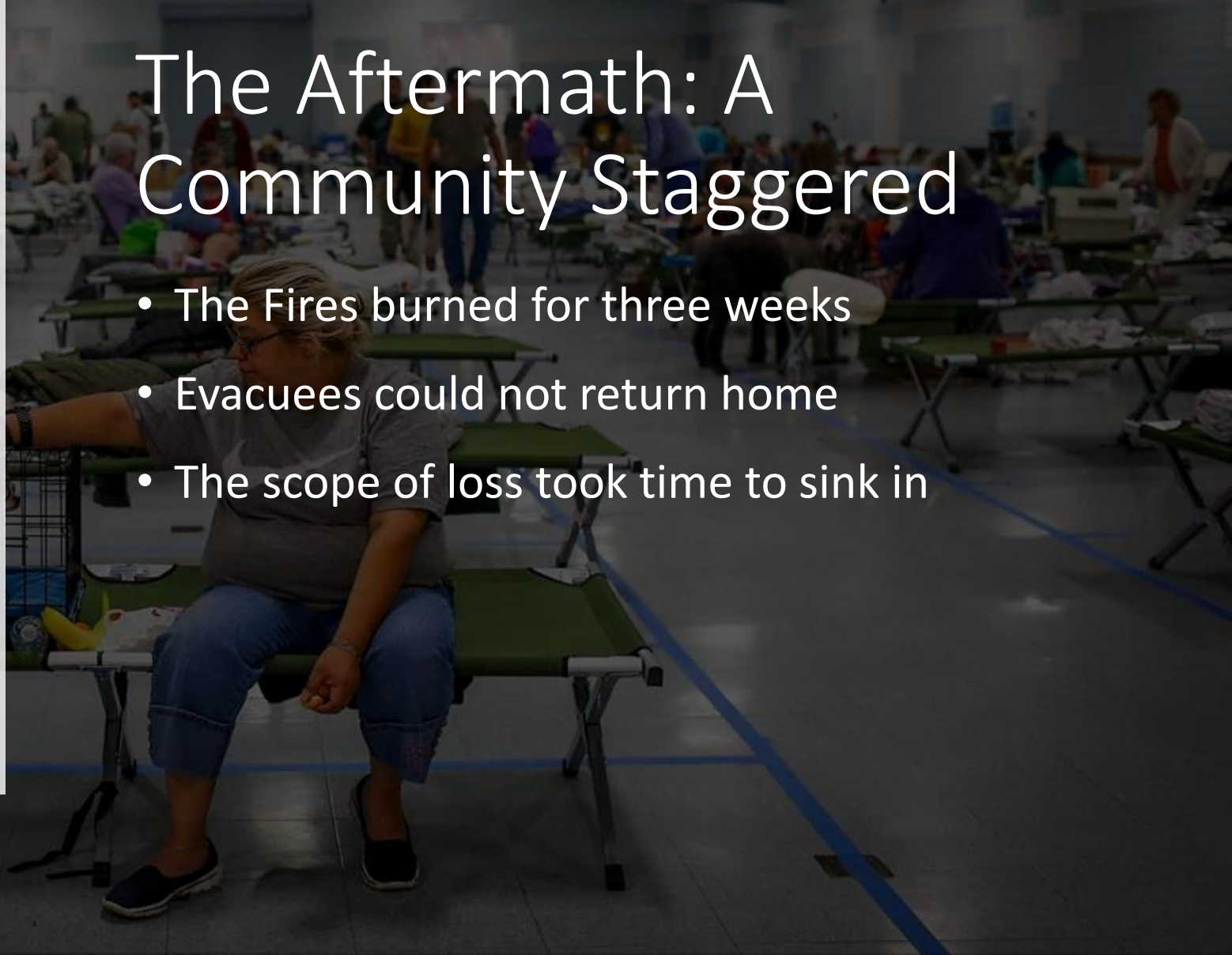
100,000 people evacuated; 110,000 acres burned

Most destructive fire in California history



The Aftermath: A Community Staggered

- The Fires burned for three weeks
- Evacuees could not return home
- The scope of loss took time to sink in





Trauma on a Community Scale

Sunday Review

SUNDAY, NOVEMBER 19, 2017 • THE PRESS DEMOCRAT • SECTION B

Inside

NewsWatch » 2
Life Tributes » 4
Community » 10

Rebuilding Sonoma County is not chance for a do-over

"Whether (homeowners) stay or they go, they should never leave because we failed them."
— Supervisor James Gore

PAUL GULLIXSON



Here's one way we can stop failing them. Let's end the armchair quarterbacking about how Fountaingrove and Coffey Park homeowners should be "allowed" to rebuild their homes and, in some cases, whether they should be allowed to rebuild at all.

It's pointless, and it's divisive. Given the general antipathy over how Fountaingrove

was built in the 1990s, it didn't surprise me to hear the let's-do-it-right-this-time chatter come out even while flames were still burning. But I'm surprised it has persisted this long.

"People are doing a nice job of representing the right of the rich, the powerful, the educated and highly paid Fountaingrove families to rebuild their now

twice-burned homes (1964 and 2017)," a Santa Rosa resident said in a letter to the editor published Tuesday. "We are going to have to figure out, plan and put into place some new, safe and sane rules for rebuilding."

So much for how "we're all in this together." Apparently membership is now income based.

I get it that people are unhappy with how Fountaingrove was developed in phases some 25 or more years ago. I remember the arguments well. People were understandably upset that ridge lines weren't protected

as they had been promised. Rules weren't followed. It was frustrating.

That said, some folks need to separate their feelings about how Fountaingrove was developed and their feelings about those who call it home.

These are not lines on a developer's blueprints that we are talking about. These are the ghostly outlines of what once were people's houses and lives. For about three decades, people have celebrated family birthdays, weddings and holidays in those homes. They've played catch, learned to ride

bikes and had block parties on those streets. Telling them how to rebuild is like telling them how they should be "allowed" to decorate their living rooms.

And, no, we do not "have to figure out, plan and put in place" new rules for them to follow. They have a right to build their houses the way they

TURN TO GULLIXSON • PAGE B3

Paul Gullixson is editorial director for The Press Democrat. Email him at paul.gullixson@pressdemocrat.com.

Banking wherever
you are.

Free ATMs Nationwide


redwoodcu.org/eservices

Whether (homeowners) stay or they go, they should never leave because we failed them.
— Supervisor James Gore

"Here's one way we can stop failing them. Let's end the armchair quarterbacking about how Fountaingrove and Coffey Park homeowners should be "allowed" to rebuild their homes and, in some cases, whether they should be allowed to rebuild at all."

-- Santa Rosa Press-Democrat Editorial,
November 19, 2017

Rebuilding: Yes? No?
Maybe?



COUNTY OF
SONOMA

Search

Residents

Discover, Engage & Thrive

Business

Trends, News & Resources

Visitors

Explore Sonoma County

Your Government

We Work for You

[Home / Rebuilding](#)

Share this page

Strong Governmental Response

- Massive Debris Removal Effort
- [Sonomacountyrecovers.org](https://sonomacountyrecovers.org)
- Emergency Housing & Shelters
- Resiliency permitting centers
- “Advanced Energy Rebuild”

Rebuilding Together

Private Bridges and Creeks
Rebuilding and Accessory Units
Rebuilding Documents
Resiliency Permit
Block Captains
Latest News

Rebuilding Together

Official Rebuilding information for unincorporated Sonoma County after the 2017 Sonoma Complex Fire.

As recovery efforts are underway after the fires, we will continue to provide resources for rebuilding, including the latest information for permits and property tax assessments. Our goal is to institute a streamlined and efficient approach so our community can recover and rebuild as quickly as possible.

If you are rebuilding in the City of Santa Rosa and are looking for Rebuilding information please visit: srcity.org/Rebuilding

Rebuilding Permits Data »

Numbers of rebuilding permits issued in unincorporated Sonoma County parcels impacted by the 2017 Sonoma Complex Fire.

Pre-Application Screening »

Schedule a pre-application screening at the [RPC](#) to help you submit a complete submittal package and streamline the issuance of your permit.

Residential Rebuilding Process

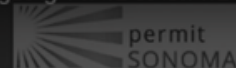
We are here to help you rebuild. This video provides a quick overview of the four phases of rebuilding and videos for each of the phases are soon to follow.

Find out more about what your [permitting process](#) will look like.

Sonoma County Rebuild Hotline:

(707) 565-1788

Rebuilding Together: Overview of Four Phases



RESILIENCY PERMIT CENTER
448 Fiscal Drive Santa Rosa

6

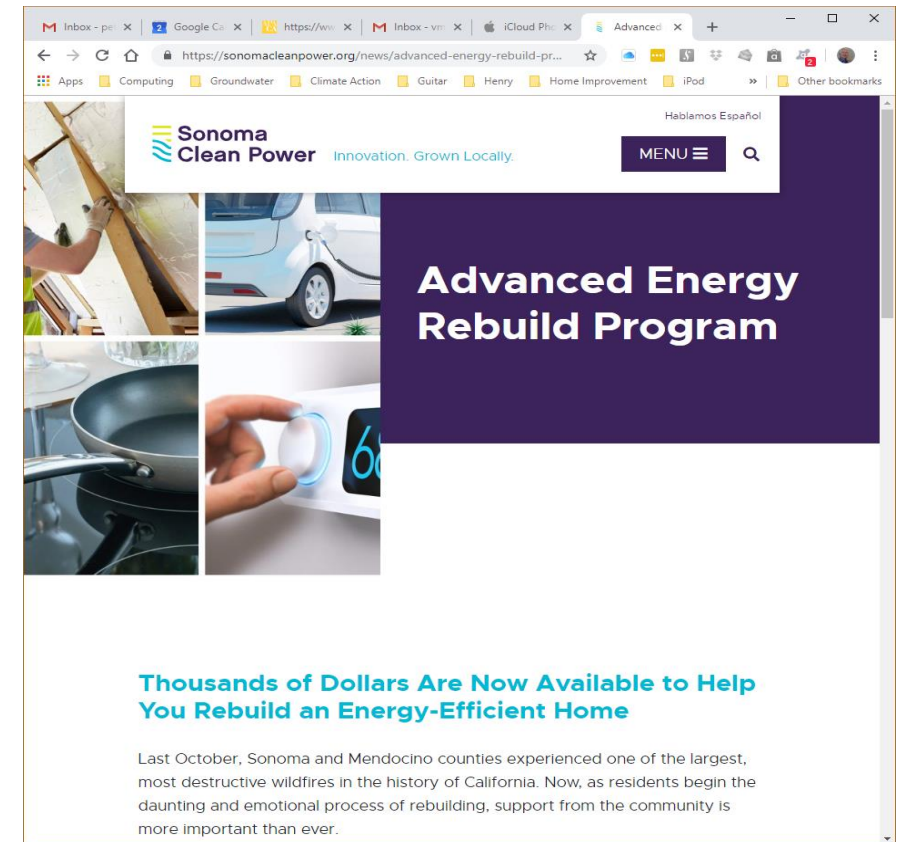
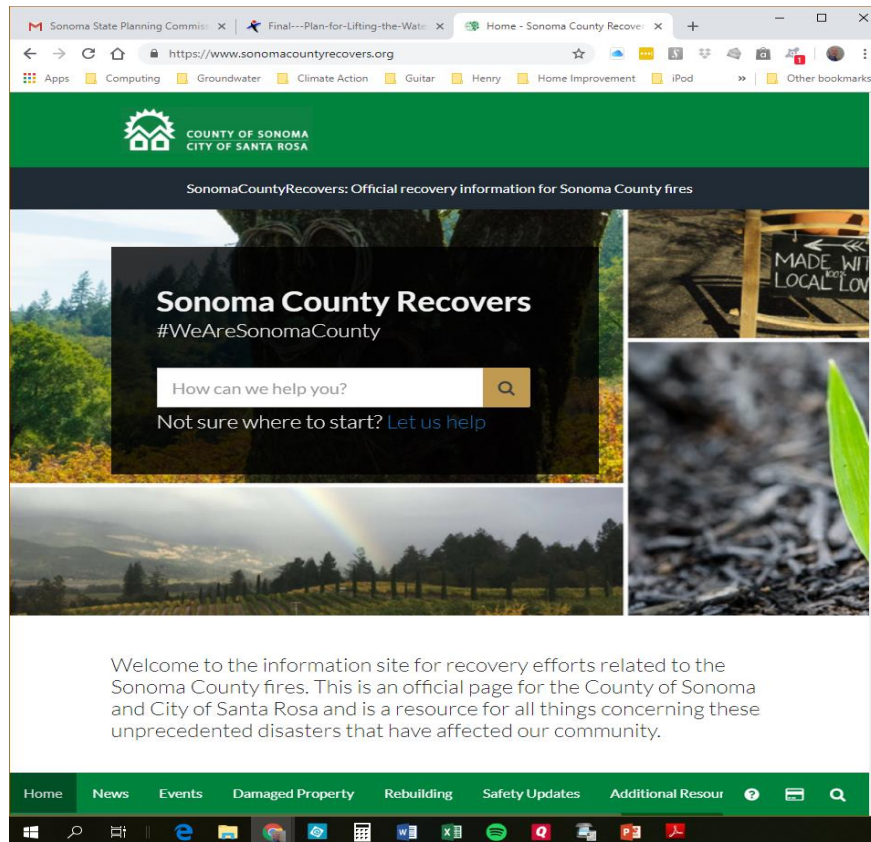
RESILIENT CITY PERMITS

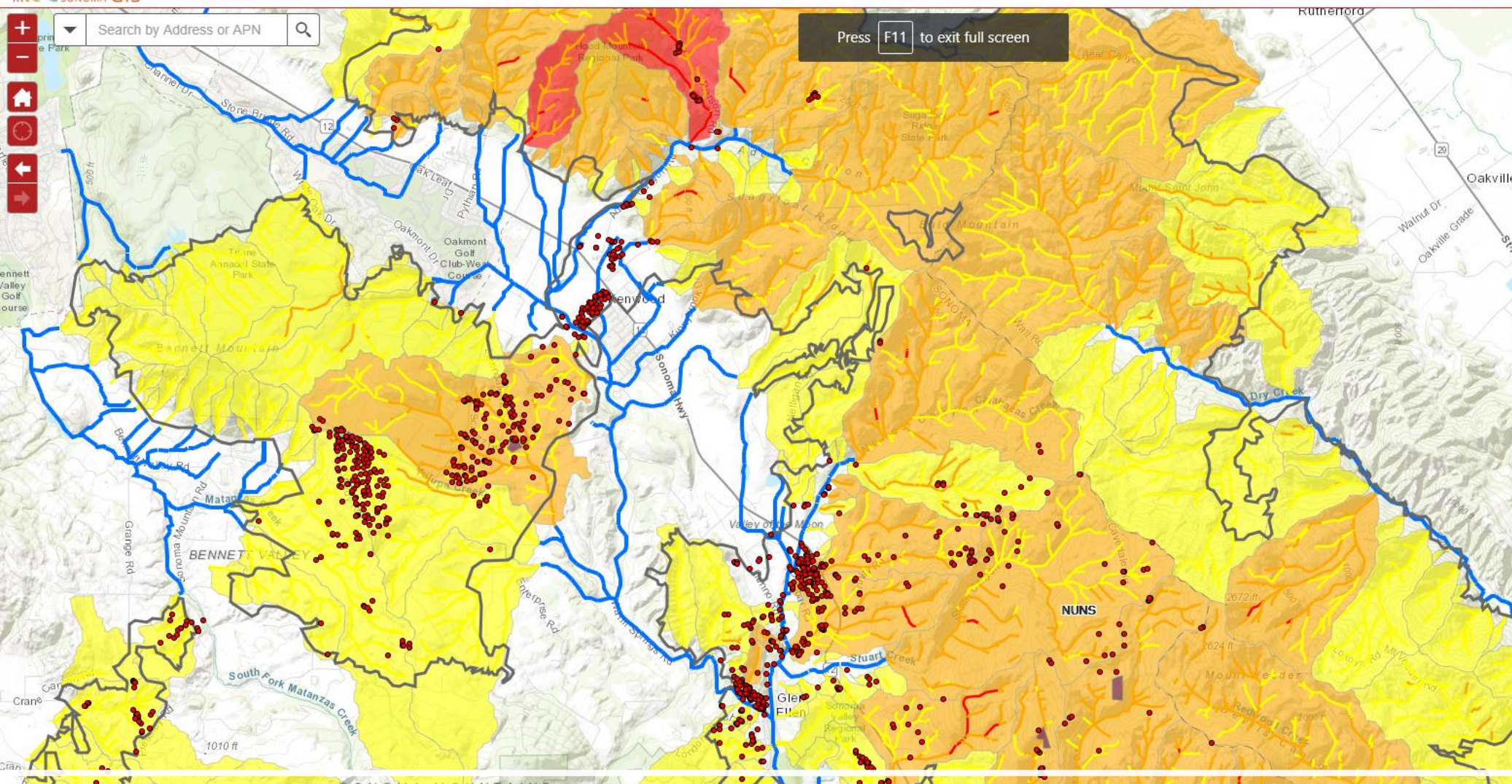
**PLANNING
BUILDING
ENGINEERING**



Debris Cleanup
Largest since 1906

Local Agencies Stand Up

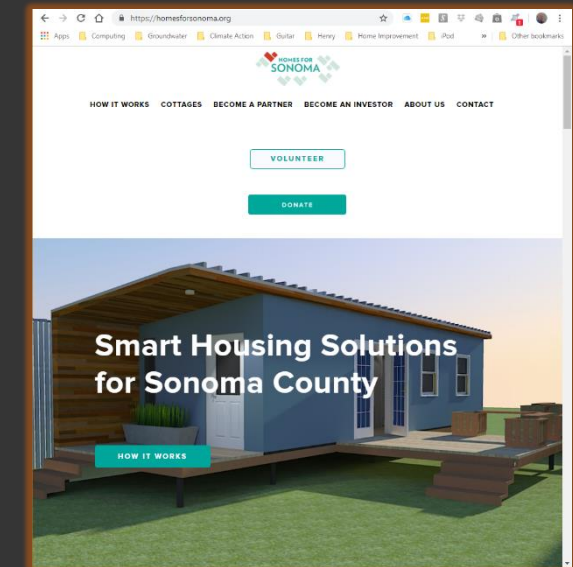




Data to Facilitate Recovery and Resiliency

Non-governmental Initiatives

- Temporary Housing & Tiny Homes
- Jump-start housing development
- Production builders return
- United Policyholders
- Tsu Chi Foundation



← → ↻ 🏠 🔍 https://apmhomesantarosa.com/coffee-park-homes/ ☆ ☁️ 📺 📶 📱 📷 📄 📧 📞



Apps Computing Groundwater Climate Action Guitar Henry Home Improvement iPod » Other bookmarks

Click to Call (707) 544-7194 f in

APM HOMES INC.
SANTA ROSA, CA
CALIF. 95706

COFFEY STRONG!



[Home](#) [About](#) [Projects](#) [Fire Survivor Resources](#) [Fountaingrove](#) [Contact](#)



PLAN 125 – THE ANNADEL

[View open concept here](#)

- 1250 SQ. FT.
- 3 BR
- 2 BATH



PLAN 145 – THE GOLDEN GATE

[View open concept here](#)

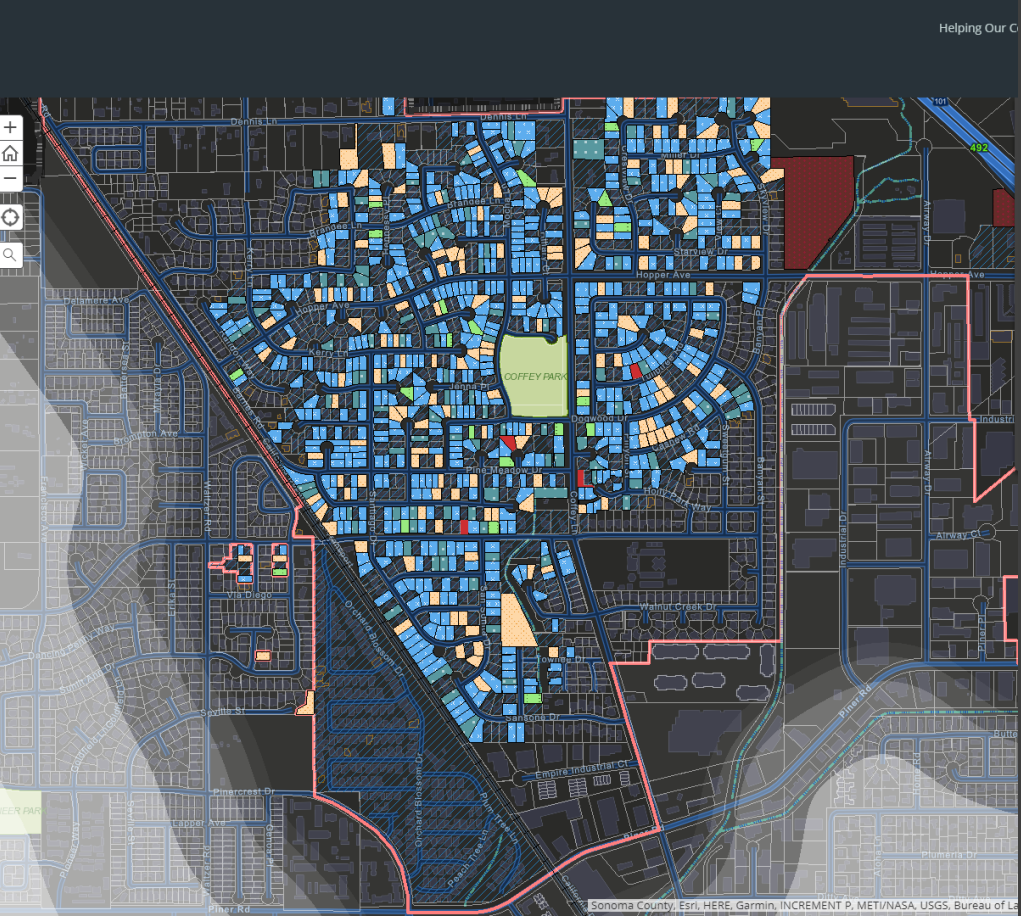
- 1453 SQ. FT.
- 3 BR
- 2 BATH

⬆



Private Sector Innovation

HomesforSonoma.org



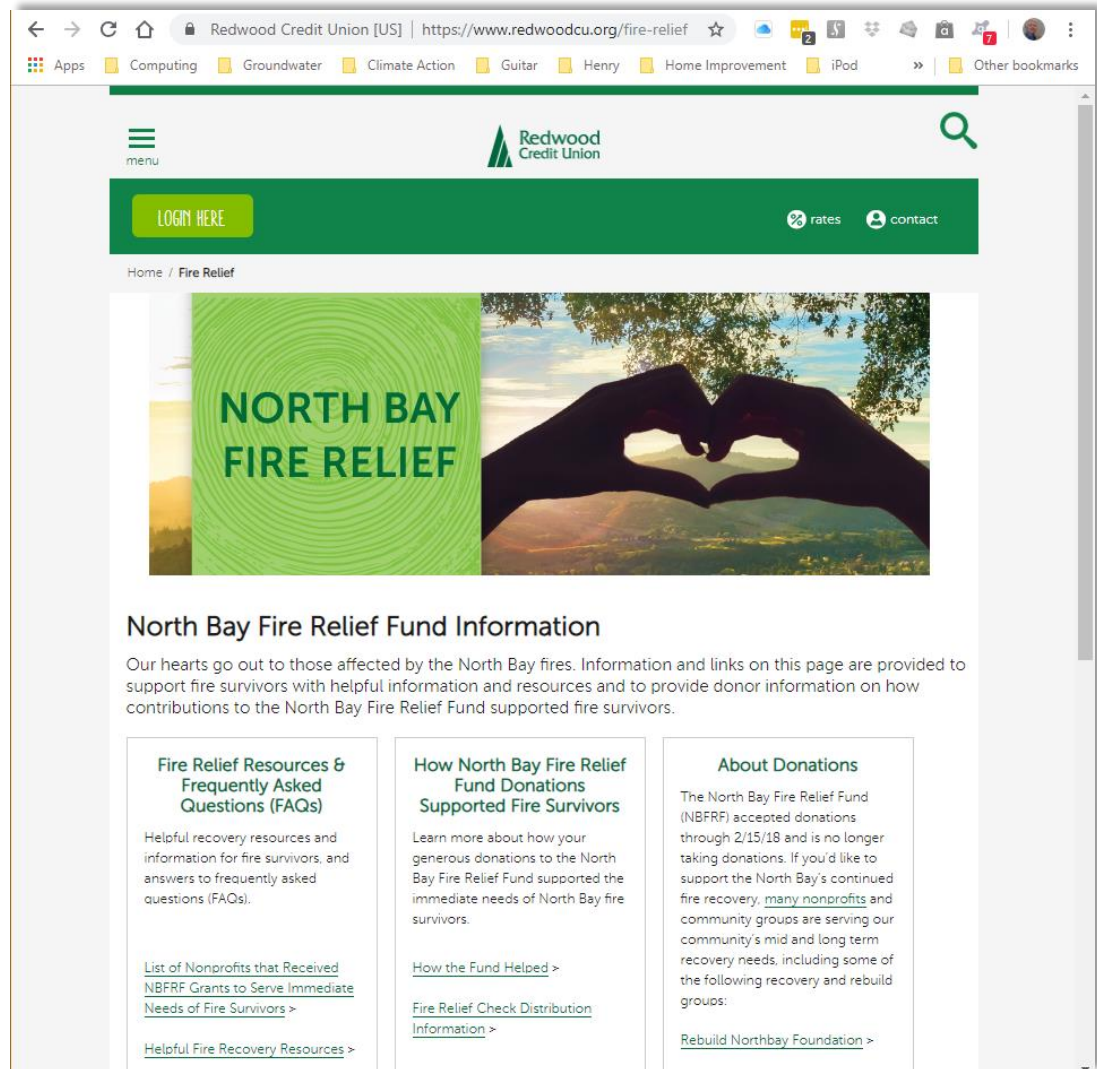
Coffey StrongSM

Built for Coffey Park, by Coffey Park. This is an informational resource for Coffey Park residents affected by the October wildfires.



#Coffey Strong

The Community Stands Up



Rebuild Challenges

- Under-insurance
- High construction costs
- Labor and materials shortages
- Infrastructure Issues
 - Water system contamination
 - New utility systems
 - Rural bridges
- Regulatory issues: fault zones
- 10 to 20 percent of owners will not rebuild



Resilient City Fire Recovery

Rebuilding Progress

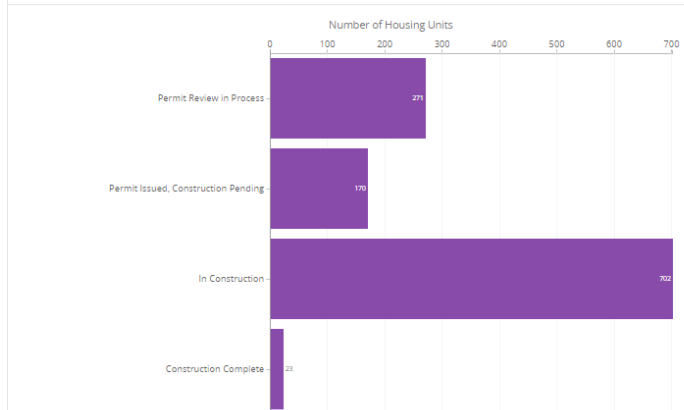
The following information is updated daily and provides snapshots relating to the various phases of the rebuilding process.

Please Note:

- The information on this page is specific to parcels within the Santa Rosa City limits that are required to complete a debris removal program due to one or more primary / secondary dwellings and / or commercial industrial units that were completely destroyed in the October 2017 fire disaster. Damaged properties are not included in the information on this page.

Resilient City Fire Recovery Progress: Residential, by Housing Units

This graph depicts the number of Residential Housing Units in each respective stage of the active permit process.



One Year Later: Where Do We Stand?



Vision Concept of Journey's End Redevelopment Project



Beyond Rebuilding: A More Resilient Community

What's a Planner to Do Now?

- “I just can’t imagine . . .”
- Reality dramatically exceeded our vision
- **This is “the New Normal”**
-- Governor Jerry Brown,
12/10/2017

FOUNTAINGROVE II COMMUNITY WILDFIRE PROTECTION PLAN October 2, 2009

Prepared for

The Fountaingrove II Open Space Maintenance Association
Fountaingrove II Board and Fire Safety Working Team



FOUNTAINGROVE II
OPEN SPACE MAINTENANCE ASSOCIATION

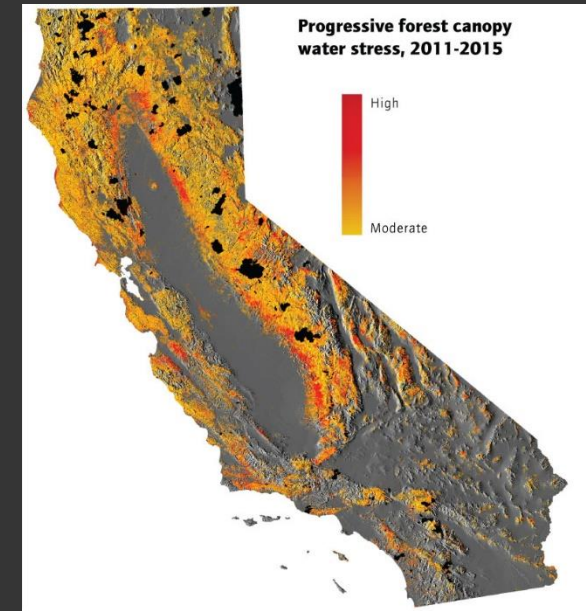
City of
Santa Rosa
California

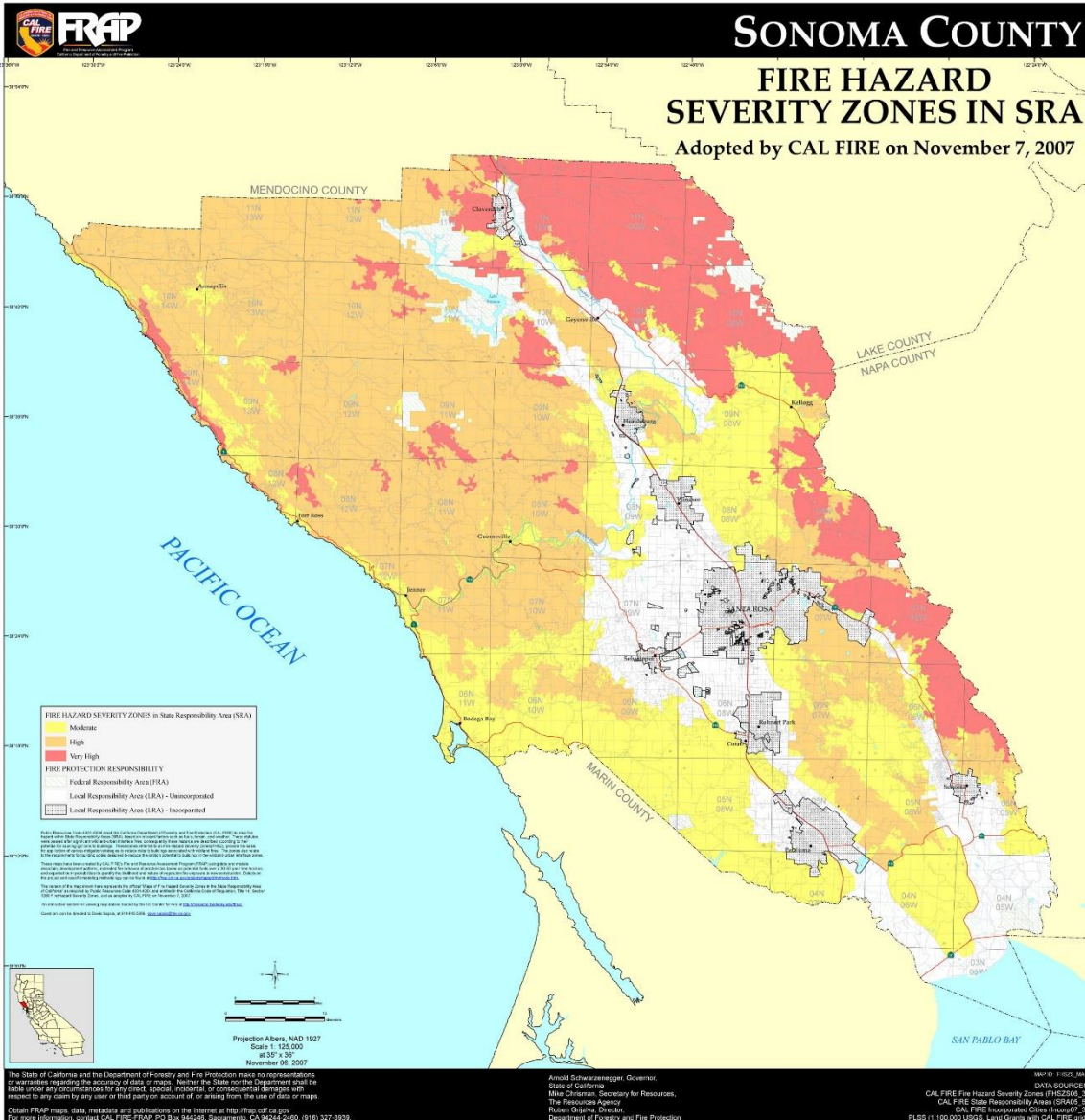


Report Prepared by
Peter Martin Pre-Fire & Vegetation Management Planning
Sonoma County Department of Emergency Services – Fire Division
See Special Acknowledgements for those providing cooperative assistance with the Report

Climate Change is Front and Center

- Years of extreme drought made landscapes more vulnerable
 - 100 million dead trees
- Increasing frequency of extreme weather events
 - Heat and wind were dominant factors in October firestorm





- Risk is Unavoidable
- How much risk is acceptable?
- How do we assess and manage risk?
- Hubris is a powerful force

