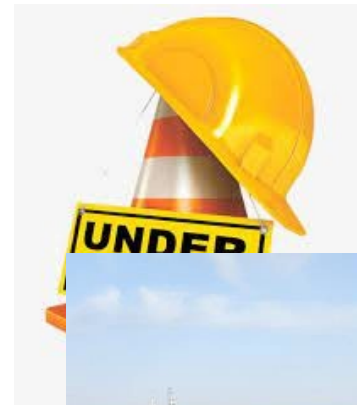


# Item 11b - Authorization to enter into a Cooperative Agreement with the City of Palo Alto regarding the construction of the Palo Alto Horizontal Levee Project

Heidi Nutters, Senior Program Manager, SF Estuary Partnership  
Samantha Engelage, Senior Engineer, City of Palo Alto

# Project Highlights

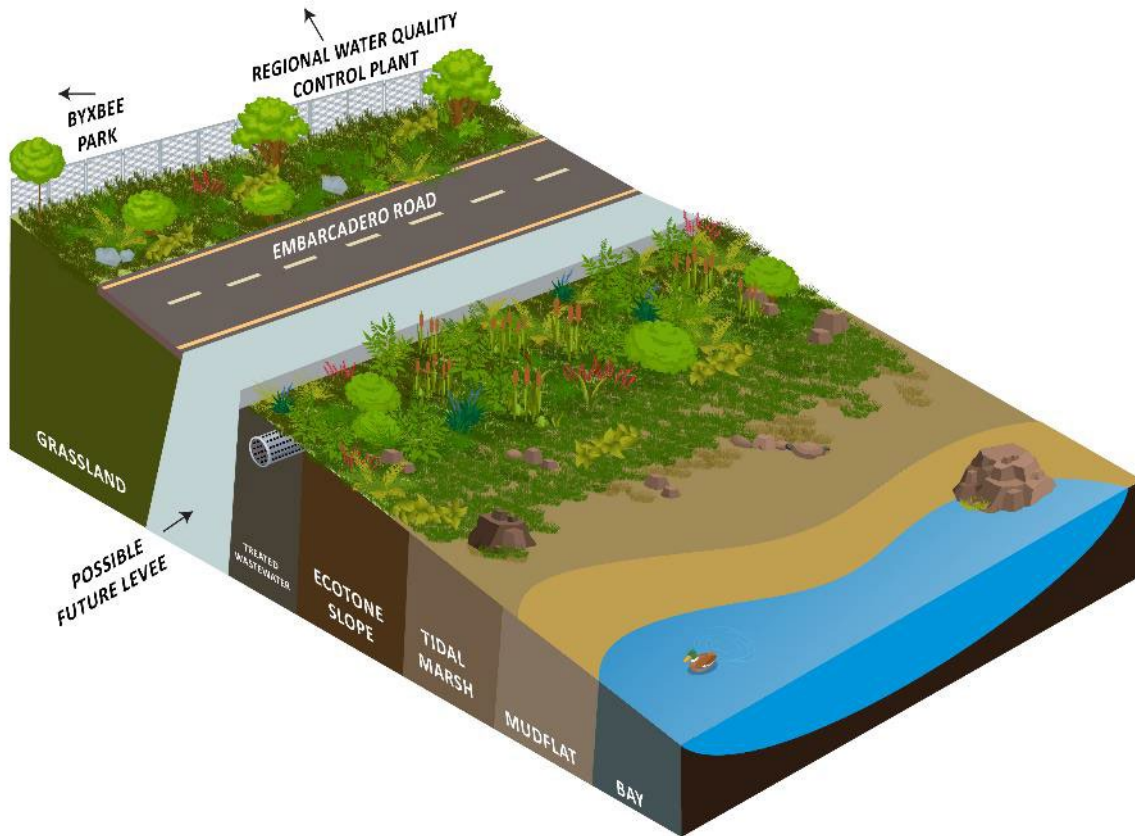
- **First horizontal levee** with treated wastewater conveyance directly to the SF Bay
- **Implements Estuary Blueprint** Task 3-1, 4-1, 4-2 – focused on design and implementation of nature-based shoreline adaptation projects
- **Innovative** design, permitting and construction strategies
- **Paves the way** for future horizontal levee projects regionally
- **Funding** from US EPA Region 9 WQIF and Climate Ready Estuaries, State Coastal Conservancy, City of Palo Alto



Expected Construction start date – July 2024

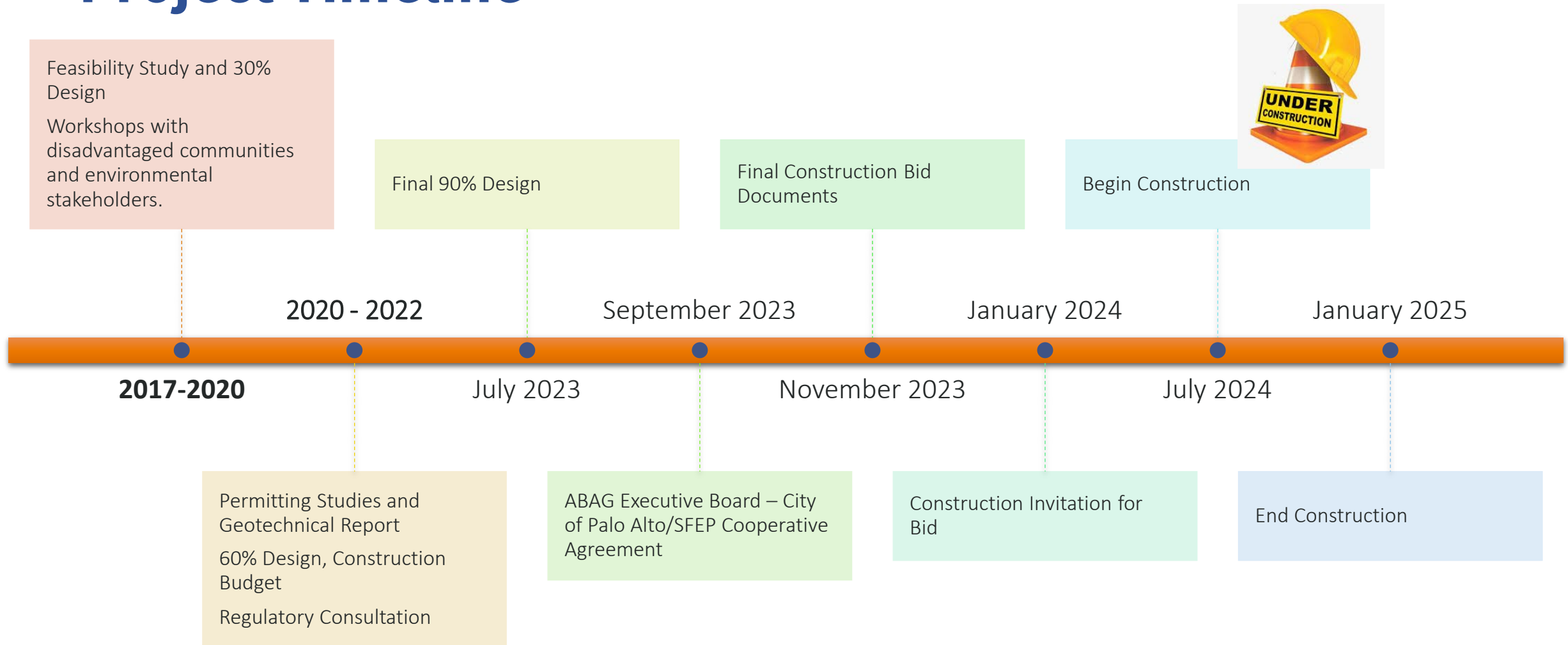


# Palo Alto Horizontal Levee – Project Goals



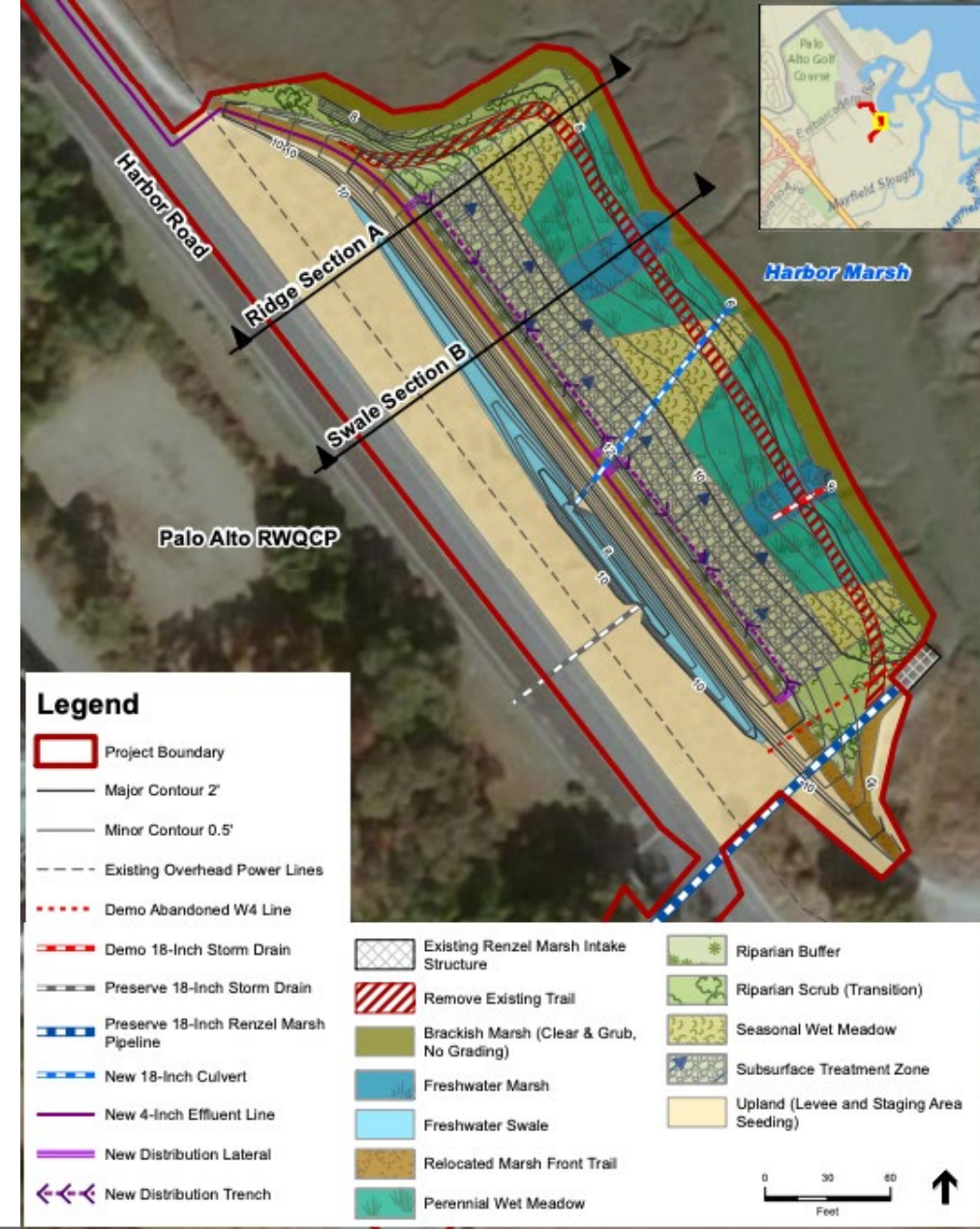
- Improve habitat along the perimeter of Harbor Marsh.
- Adapt to sea level rise and coordinate with future larger levee improvement project (i.e., SAFER Bay/Shoreline Study).
- Maintain public access to the existing trail system while providing opportunities for compatible low-impact recreation, increased social infrastructure, and educational opportunities on sea level rise.
- Ensure perspectives of marginalized communities are incorporated into social infrastructure and educational components.
- Provide polishing treatment to discharged treated wastewater.

# Project Timeline



# Project Components

- 500-linear-foot levee berm
- 315-linear-foot horizontal levee and irrigated ecotone
- New pump at the RWQCP
- Buried pipeline (effluent line) along Harbor Road and Embarcadero Road
- Relocated trail



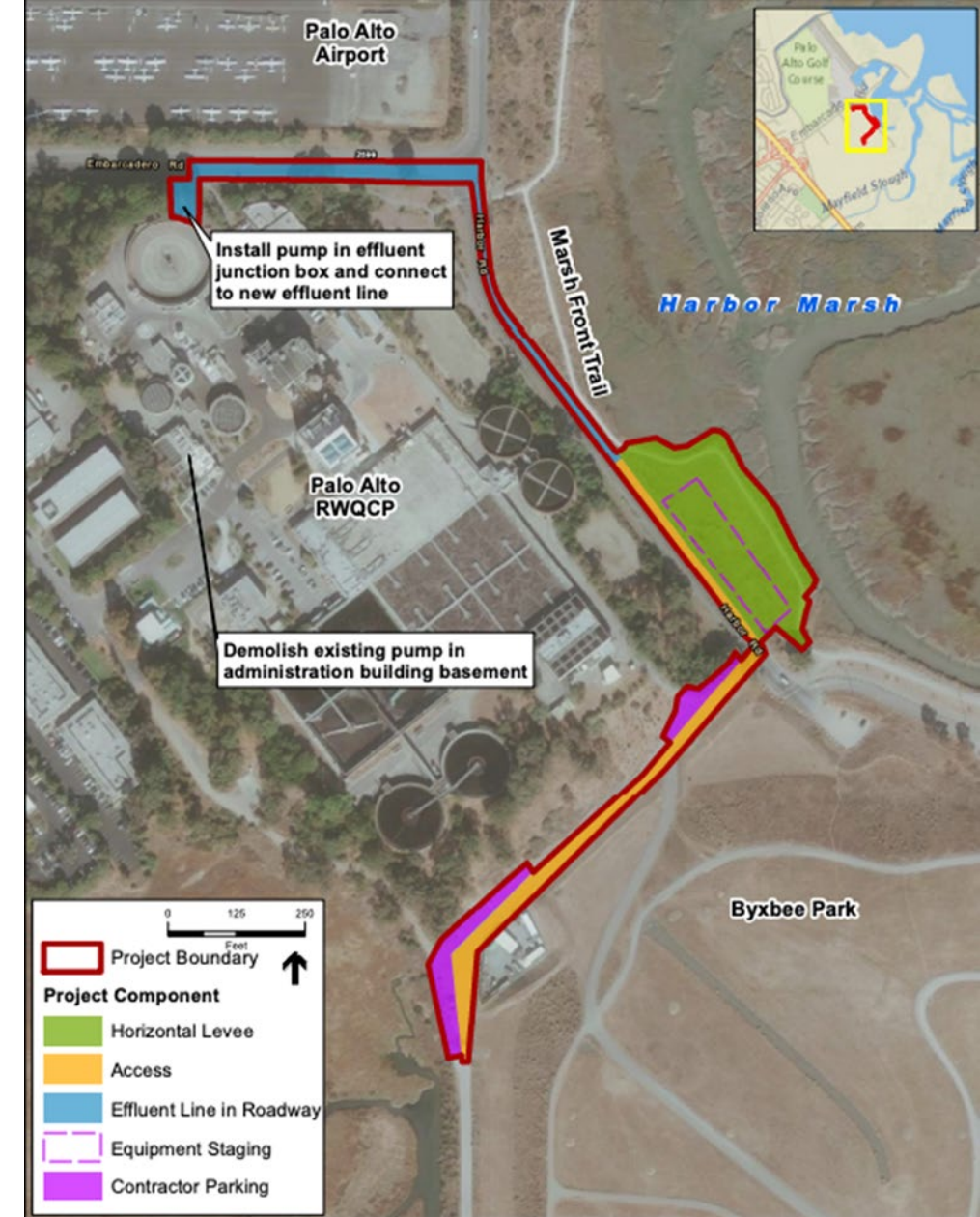
# Partnership and Programming

- ABAG/SFEP and City of Palo Alto – partners on construction, construction management, biological monitoring. All contracts will be managed by ABAG/SFEP
- Community-based monitoring and education with Nuestra Casa (East Palo Alto) and CSU Channel Islands
- Plant propagation, community planting days and post-construction monitoring with Save The Bay



# Project Setting

- Harbor Marsh and Baylands Nature Preserve backed by low levees and a closed landfill
- Significant City of Palo Alto infrastructure behind these levees: RWQCP, airport, Palo Alto Flood Basin, roads and light commercial development
- Coordinates with SAFER Bay levee/Shoreline Study and shares the same alignment with two alternatives



# Partnership Responsibilities



## City of Palo Alto

Landowner

Permittee on all permits

Responsible for long-term maintenance of the site

At the table in all aspects of design/engineering, construction, construction management, planting, monitoring and community outreach



## ABAG/SFEP

Contract administration for design/engineering, construction, construction management, planting and some monitoring



# Components of the Cooperative Agreement

- Lays out responsibilities for:
  - Construction
  - Construction Management
  - Planting – Save The Bay
  - Monitoring
- Describes how ABAG/SFEP will coordinate to ensure project success

# Project Contacts

- Heidi Nutters, Senior Program Manager, SF Estuary Partnership:  
[heidi.nutters@sfestuary.org](mailto:heidi.nutters@sfestuary.org)
- Sam Engelage, Senior Engineer, City of Palo Alto:  
Alto: [Samantha.Engelage@cityofpaloalto.org](mailto:Samantha.Engelage@cityofpaloalto.org)

