

BAY AREA PLANNING DIRECTORS ASSOCIATION
OCTOBER 13, 2017

Presented by Steve Heminger
Executive Director



Association of Bay Area Governments

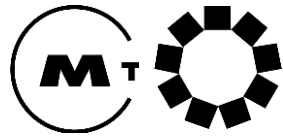
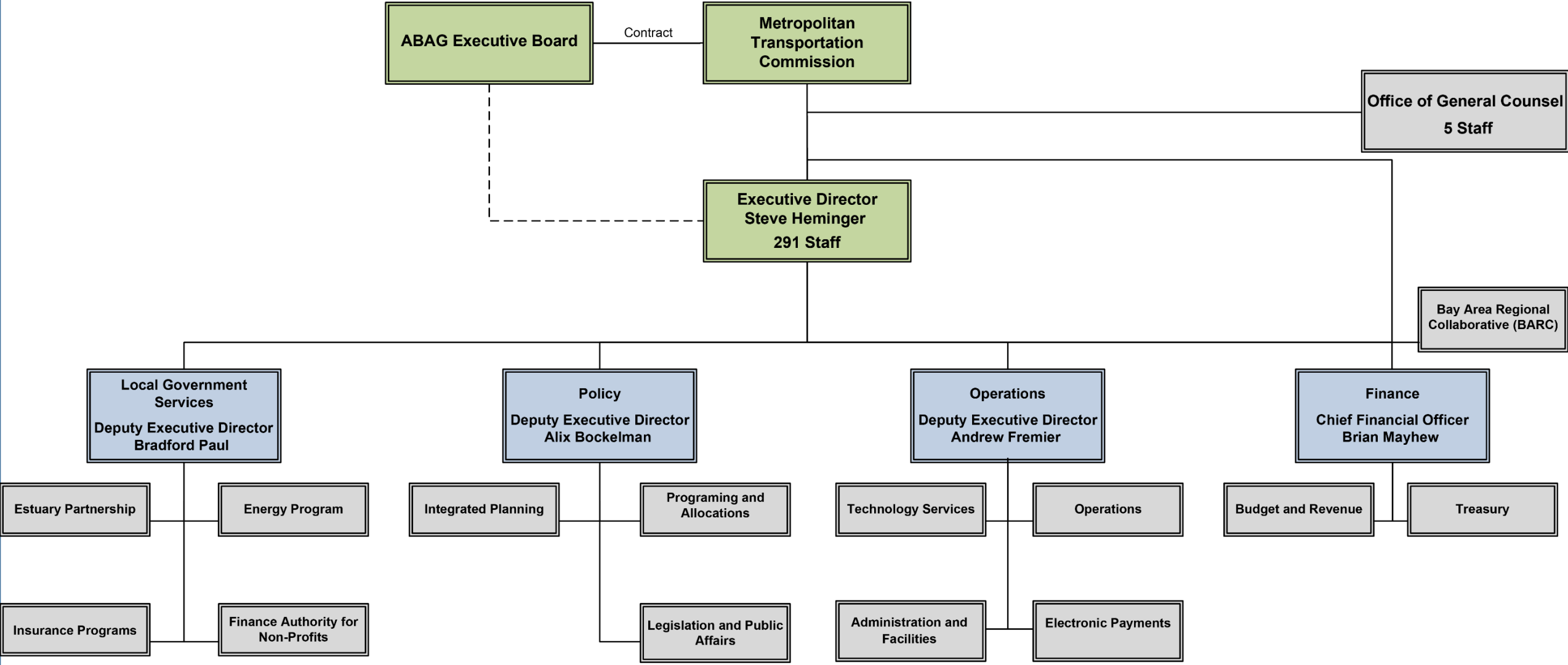


Metropolitan Transportation Commission

CONSOLIDATION

- 1 staff serving 2 boards
- 291 staff strong

STAFF ORGANIZATION



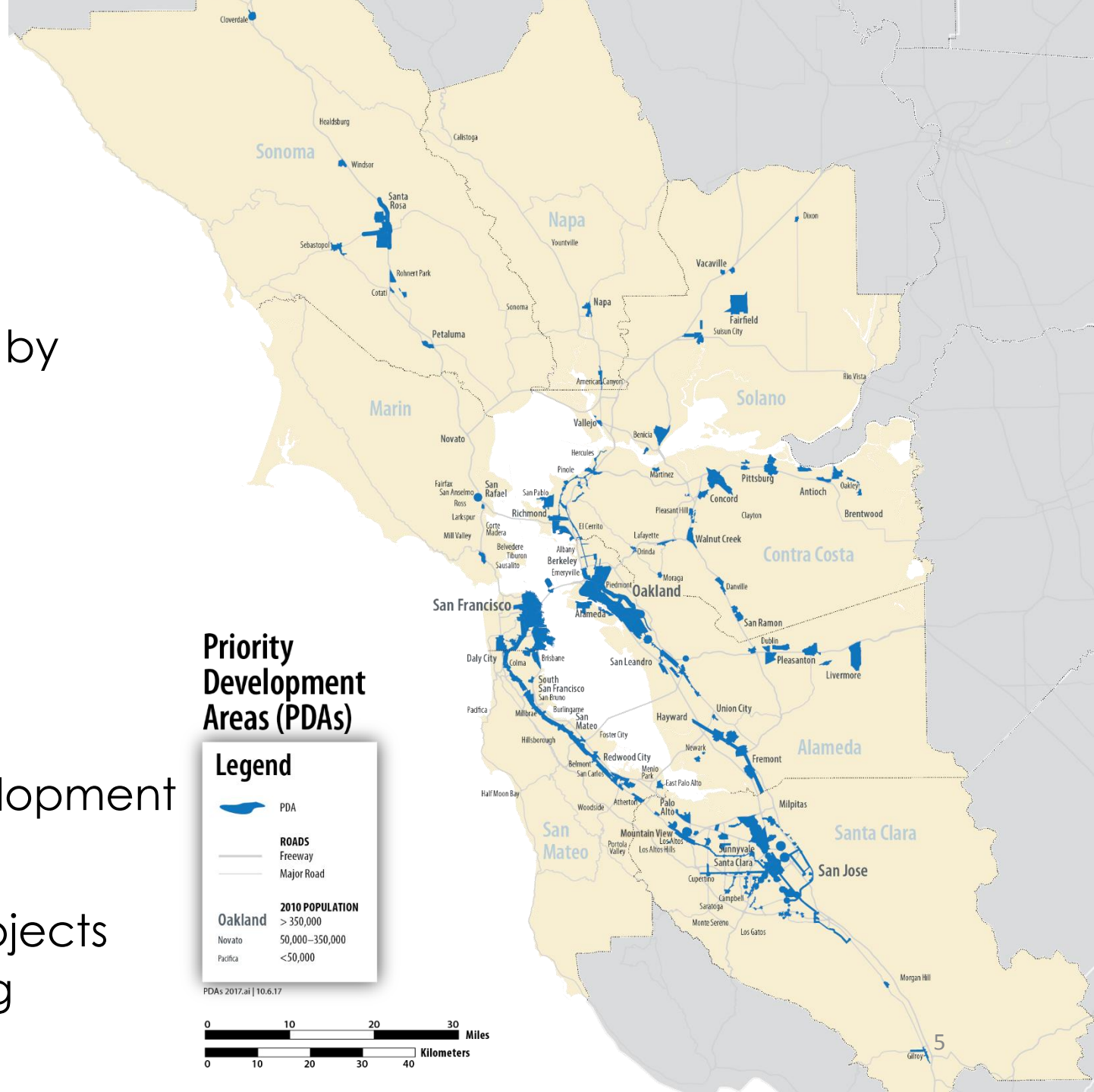
SERVING THE REGION



Priority Development Area (PDA) Planning & Technical Assistance

* PDAs: Existing neighborhoods, served by public transit, identified for additional, compact development

- PDA Planning – 51 projects
 - 70,000 + housing units
 - 110,000 + new jobs
 - 26 million sq. ft. commercial development
- Technical/Staffing Assistance – 31 projects
 - Focus on barriers to local planning implementation



80K by 2020 Challenge Grant

One Bay Area Grant “2” program sets aside \$30 million for top 10 producers of housing

- Targets 80,000 new units between 2015 and 2020
- Very Low (35,000 units), Low (22,000), Moderate (25,000)
 - Very Low/Low must be deed-restricted to receive credit towards challenge
- Units must be in Priority Development Areas (PDAs) or Transit Priority Areas (TPAs)
- Projects must be federal-aid eligible



StreetSaver[®]

MTC'S PAVEMENT MANAGEMENT SOFTWARE/Technical Assistance

\$2 million annually to local agencies

USED BY ALL 109 BAY AREA JURISDICTIONS & 400+ NATIONWIDE

LOCALLY

- Subsidize subscription fees
- Grants for asset data upkeep
- Training & technical support

REGIONALLY

- Annual pavement condition report for all jurisdictions
- Local streets & roads maintenance needs assessment
- Funding policy analysis & discussion

STATEWIDE

- Analytical engine used for California Local Streets & Roads Needs Assessment
- Provided data for passage of SB 1

ARTERIAL OPERATIONS

- Program for Arterial Signal Synchronization (PASS)
 - \$1 million annually to assist local governments
- Innovative Deployments to Enhance Arterials (IDEA)
 - Traffic Signal Timing Plan Updates
 - Transit Signal Priority
 - Adaptive Signal Control Technology
 - Advanced Connected Vehicle Applications





- **Translate technical natural hazard data**
- **Support local mitigation/adaption planning**
- **Provide technical assistance**
 - ✓ Policy development
 - ✓ Grants
 - ✓ Community of practice
- **Haywired** – a joint project with the U.S. Geological Survey to study regional impacts from magnitude 7.05 earthquake on the Hayward fault, and inform the policy discussion about economic resilience



Single Family

- Free step-by-step technical assistance to consumers & contractors for energy & water efficiency programs
- Rebates, education & outreach

Multifamily

- Technical assistance to property owners for energy upgrades & rebates

Codes & Standards

- Advocacy & support for adoption of green building codes
- Trainings to governments on standards & best practices

Financing

- Options to assist consumers with energy projects

BAY AREA Regional Energy Network



SF Estuary Blueprint

- Sustain and improve habitats and living resources
- Bolster the resilience of ecosystems, shorelines, and communities to climate change
- Improve water quality and increase the quantity of fresh water
- Champion the Estuary
 - ✓ Annual Conference
 - ✓ Steering Committee



<http://www.sfestuary.org/>

Next Up...



Plan Bay Area 2040



Plan Bay Area 2040

adopted July 2017

Long-range transportation, housing plan

Key implementation issues:

- Housing
- Economic Development
- Resilience

CASA Overview

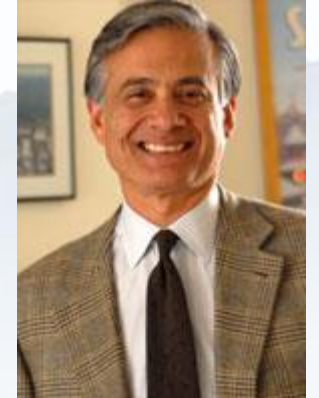
Leaders across the Bay Area building actionable political consensus to increase housing production at all levels of affordability, preserve existing affordable housing and protect vulnerable populations from housing instability and displacement



Fred Blackwell



Leslye Corsiglia



Michael Corvarrubias



COMMITTEE TO HOUSE
THE BAY AREA



Economic Development District

- Federal designation by U.S. Economic Development Administration to represent multi-county areas
- Public, private and non-profit sectors working together on a strategic blueprint for regional collaboration
- MTC/ABAG started the process in 2016



RESILIENT

BAY AREA CHALLENGE

BY

DESIGN

- Engineers, architects, designers & community members
- Identify critical areas throughout the Bay Area
- Propose solutions to **sea level rise, severe storms, flooding and earthquakes**

How can we work together?

bayareametro.gov

