



The Committee to House the Bay Area

Overview
May 2018

Ken Kirkey, Planning Director
MTC/ABAG

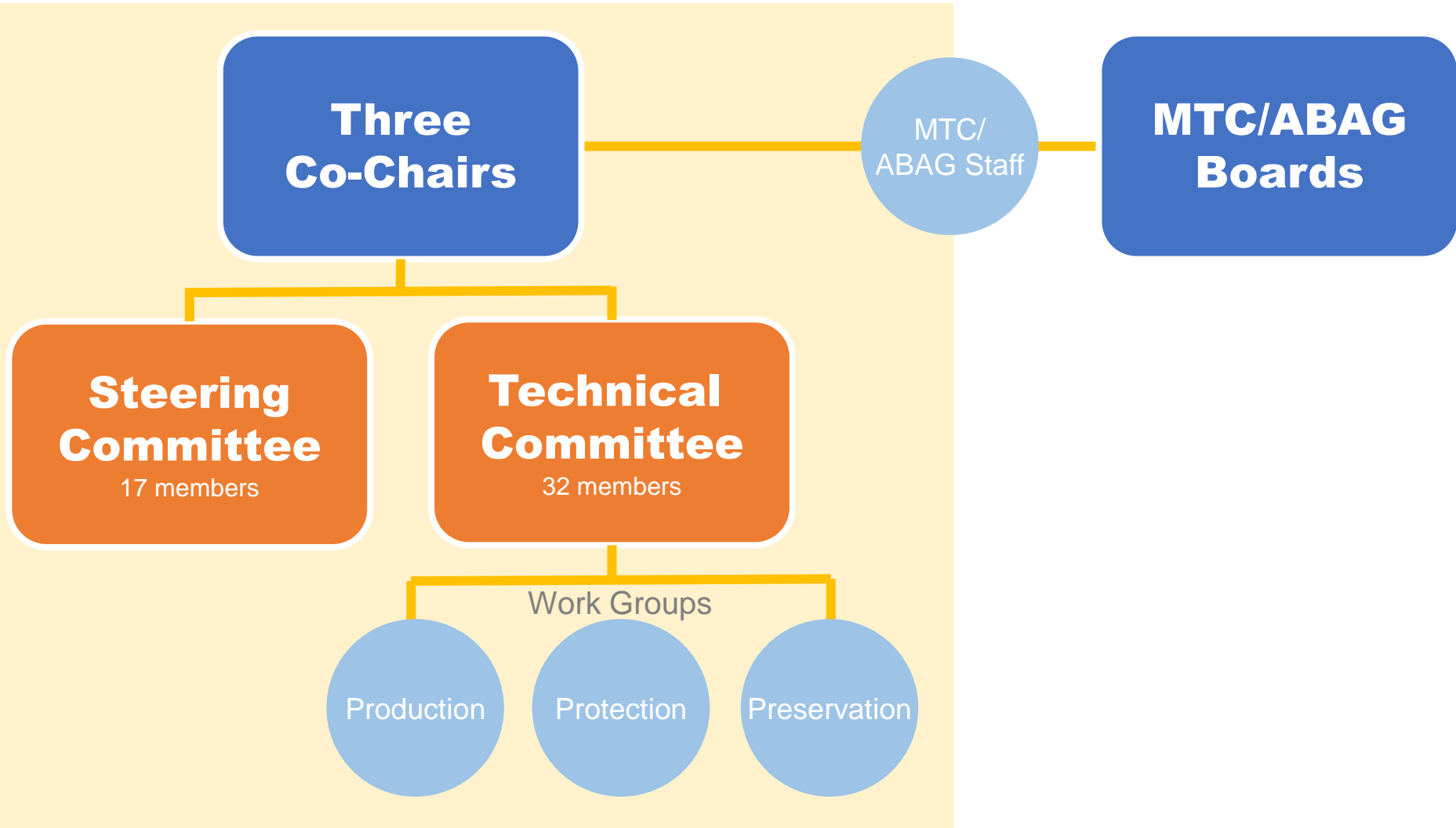
Plan Bay Area 2040

1. Performance on housing affordability and displacement indicators
2. Action Plan, adopted in 2017 w/ PBA 2040
3. Blue-ribbon committee to find “game-changing” solutions



FIGURE 1.4 Share of income spent on housing by Bay Area households in 2015, segmented by income level.

CASA Organizational Structure



CASA Compact Framework



Regulatory Relief



Policy Toolkit



Funding /Resources



State Legislation



Outreach /Engagement

Production

Preservation

Protection

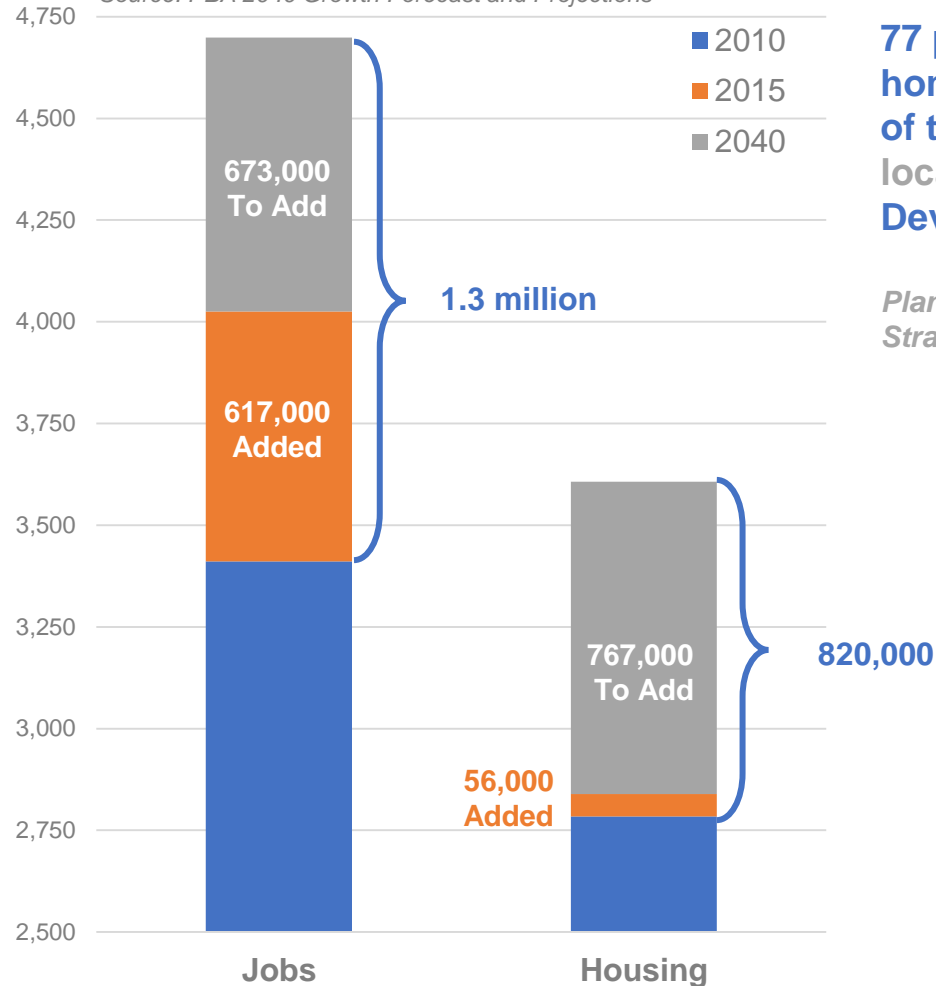
Magnitude of the Undertaking

Job and Housing Growth and Projections, Bay Area 2010, 2015, 2040

- A. PBA 2040 projects the region will add 1.3 million new jobs between 2010 and 2040.
- B. PBA 2040 also projects that the region will add 820,000 new homes in that time.
- C. By 2015, the region added almost half that projected job growth, or 617,000 of the 1.3 million jobs.
- D. By comparison, the region added only 56,000 new homes between 2010 and 2015, or 7 percent of the total projected for 2040.

Jobs and Housing Growth and Projections, Bay Area, 2010-2040

Source: PBA 2040 Growth Forecast and Projections



77 percent of the new homes and 55 percent of the new jobs will be located in Priority Development Areas.

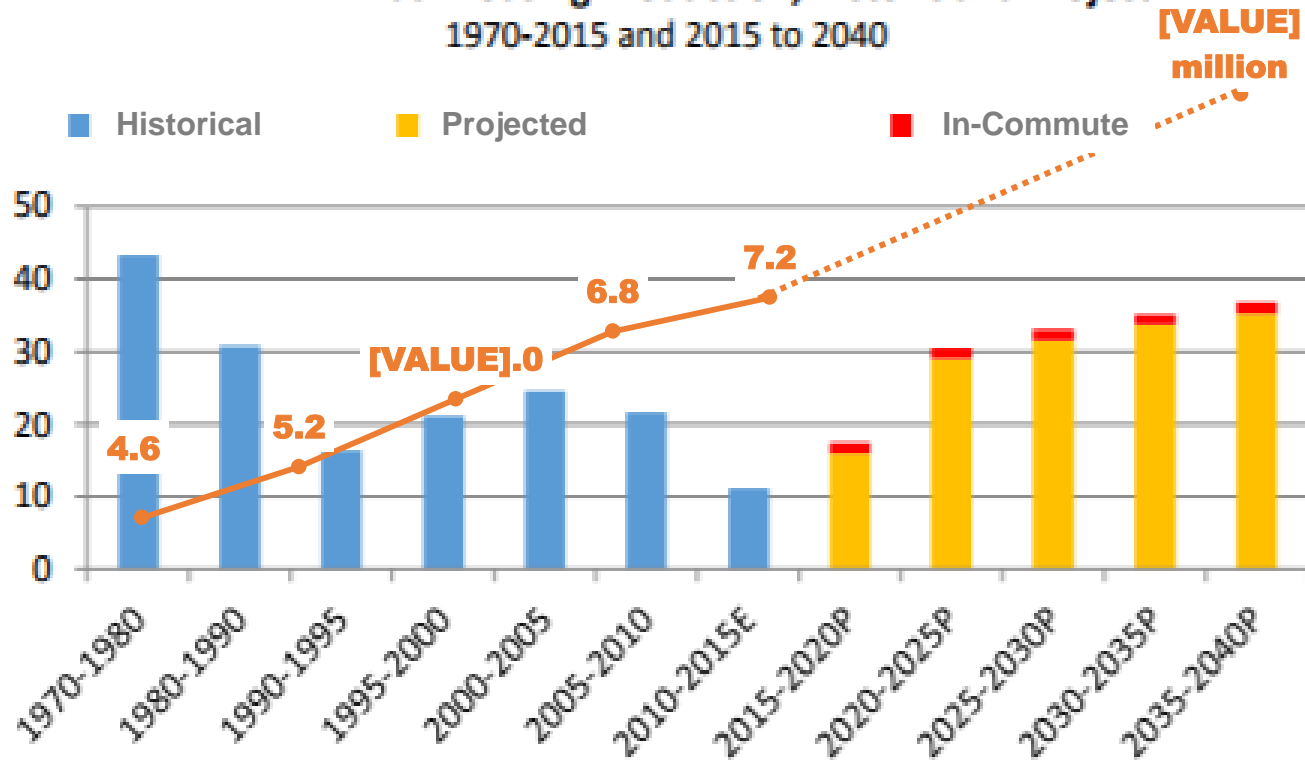
Plan Bay Area 2040 Growth Strategy, 2010-2040

Magnitude of the Undertaking

Housing and Population Growth in the Bay Area

- A. The region's population was 4.6 million in 1970 and is projected to grow to 9.6 million by 2040.
- B. PBA 2040 projects the region will ramp up to building 35,000 homes per year between 2030 and 2040.
- C. Between 2000 and 2015, the region built an average of 18,000 homes annually.
- D. By comparison, the region built 42,000 new homes annually between 1970 and 1980.

Annual Housing Production, Historic and Projected
1970-2015 and 2015 to 2040



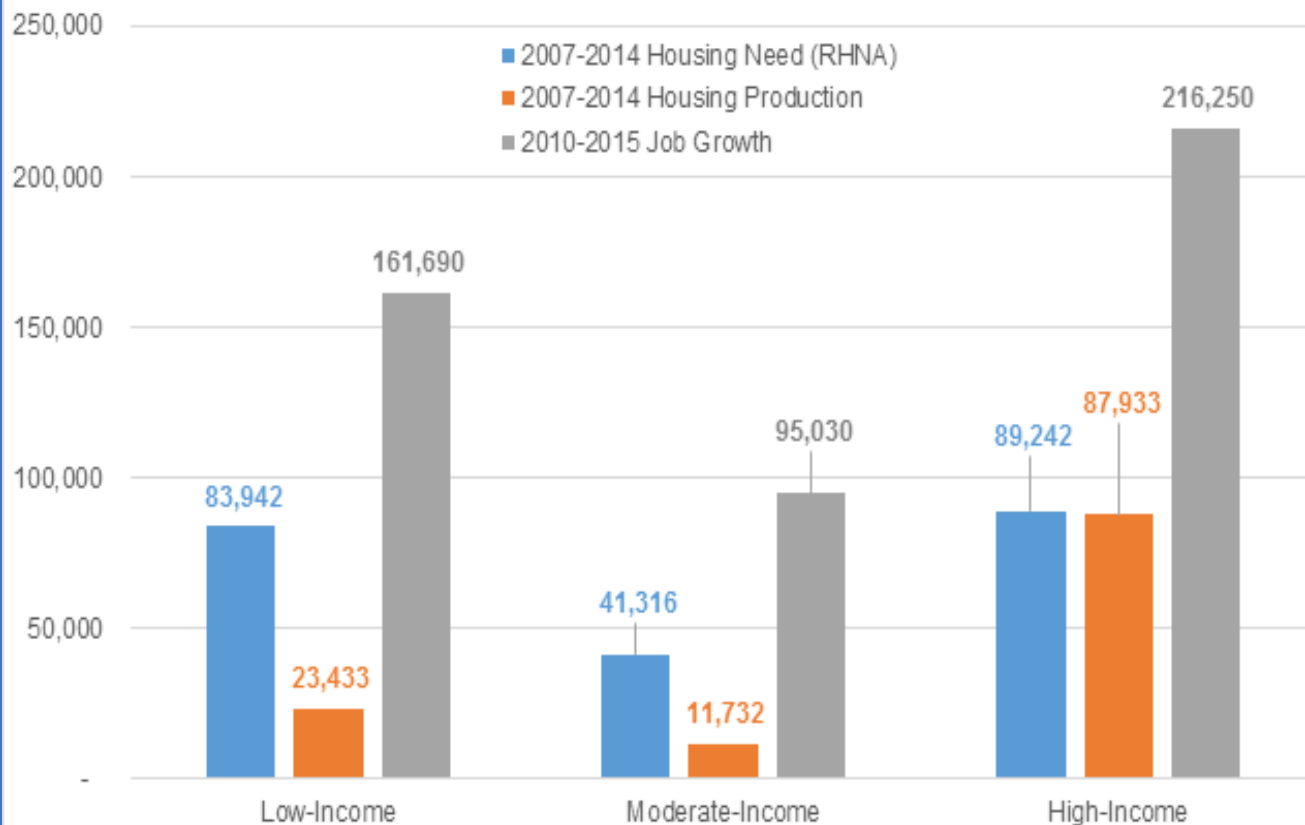
Source: US Census Bureau, CA Department of Finance, MTC/ABAG

Magnitude of the Undertaking

Housing and Population Growth in the Bay Area

- A. Jobs and population growth is anticipated to outpace housing production.
- B. Estimates of funding needed to build a sufficient number of deed-restricted affordable units range from \$1 billion to \$3 billion annually.

Jobs Growth and Housing Production, Bay Area



Source: MTC/ABAG compilation of data



Key Milestones

Winter 2017/ 2018

Identify Strategies

Spring 2018

Prioritize Strategies

Summer

Negotiate Compact

Fall/ Winter

**Broader Outreach and
Implementation Steps**

For more information:

Ken Kirkey, Planning Director, kkirkey@bayareametro.gov

Vikrant Sood, Principal Planner, vsood@bayareametro.gov

www.mtc.ca.gov/casa

Local Jurisdiction Engagement

Survey (TBD)

- Input from elected officials and staff
- Local jurisdiction perspective on:
 - Barriers and challenges related to housing (i.e., funding, market strength)
 - Effectiveness of existing programs (i.e., OBAG)
 - Resources needed to accelerate compliance with state housing laws

Advisory Group (Ongoing)

- Input from elected officials
- *Membership* – elected officials on Steering Committee and chairs of RPC and RPC-Housing Sub-Committee

Open Houses (TBD)

- Listening sessions hosted by mayors in the cities of San Jose, San Francisco, Oakland and Santa Rosa

Meetings (Ongoing)

- ABAG Executive Board
- Bi-annual BAPDA meetings
- Monthly meetings of planning directors in each county