

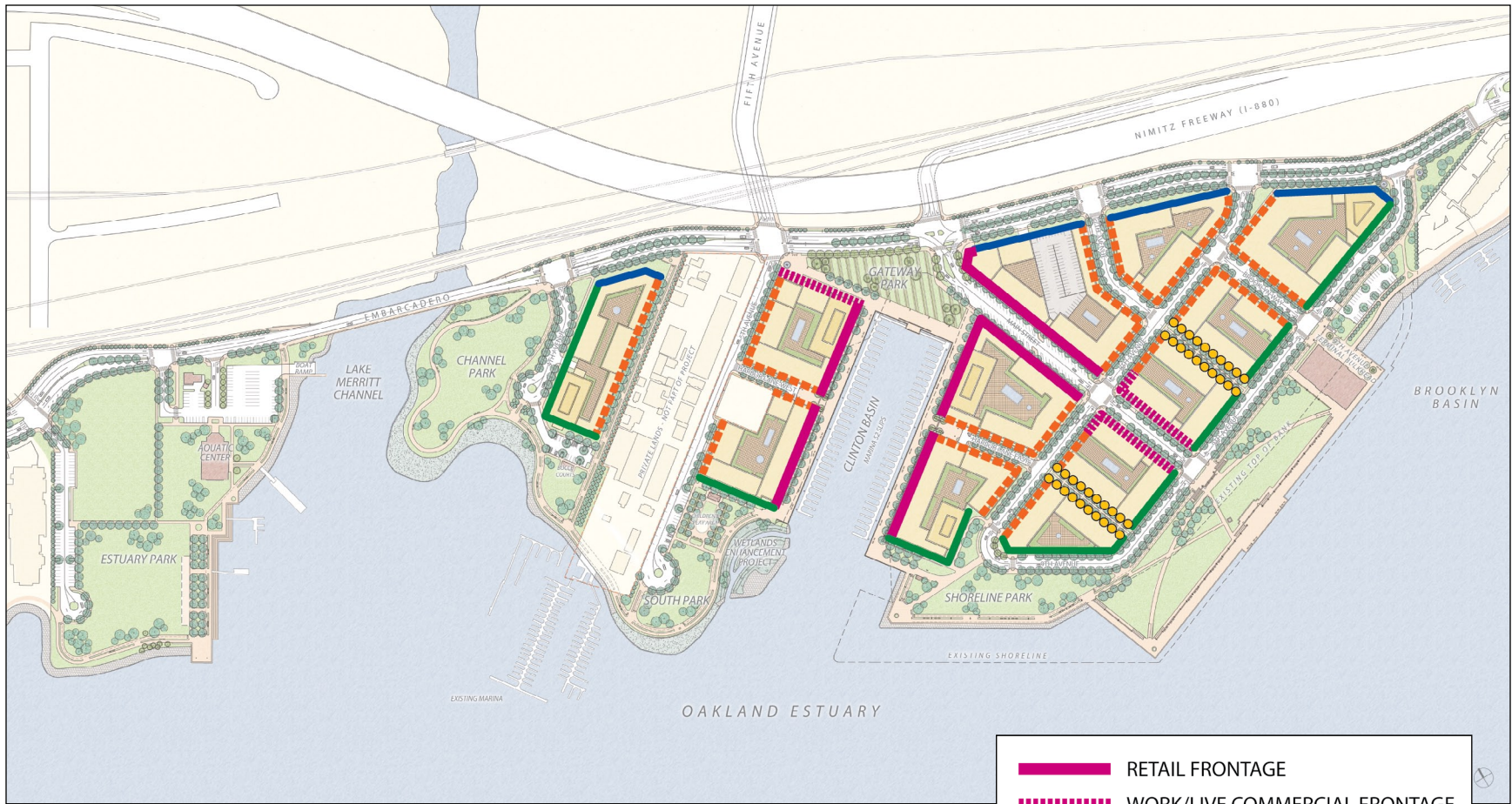
SIGNATURE  
DEVELOPMENT  
GROUP

*Brooklyn Basin & The Hive*



*Brooklyn Basin*





**BUILDING FAÇADE AND STREET FRONTAGE LINKAGE**

- RETAIL FRONTAGE
- WORK/LIVE COMMERCIAL FRONTAGE
- MIXED USE STREET FRONTAGE
- MEWS FRONTAGE
- WATERFRONT PARK EDGE FRONTAGE
- EMBARCADERO FRONTAGE





VALENTINO

EVER ISLAN

RIVER

Vasce gessate

la prima

SALE

parking



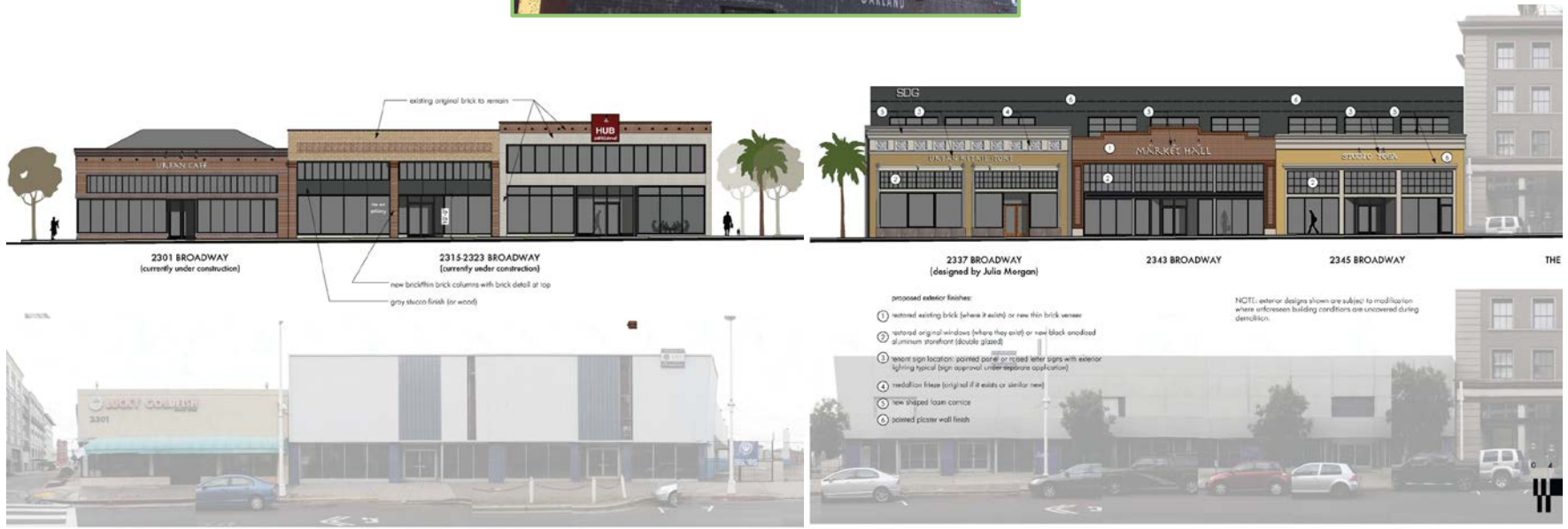








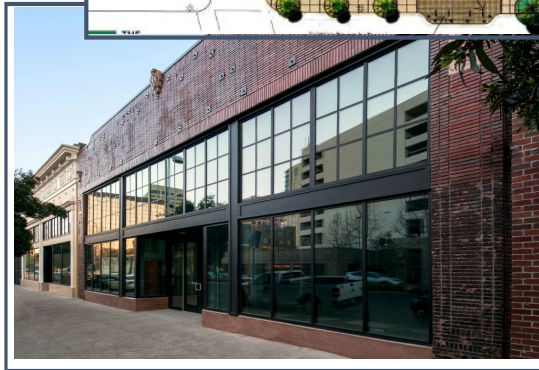
# Hive





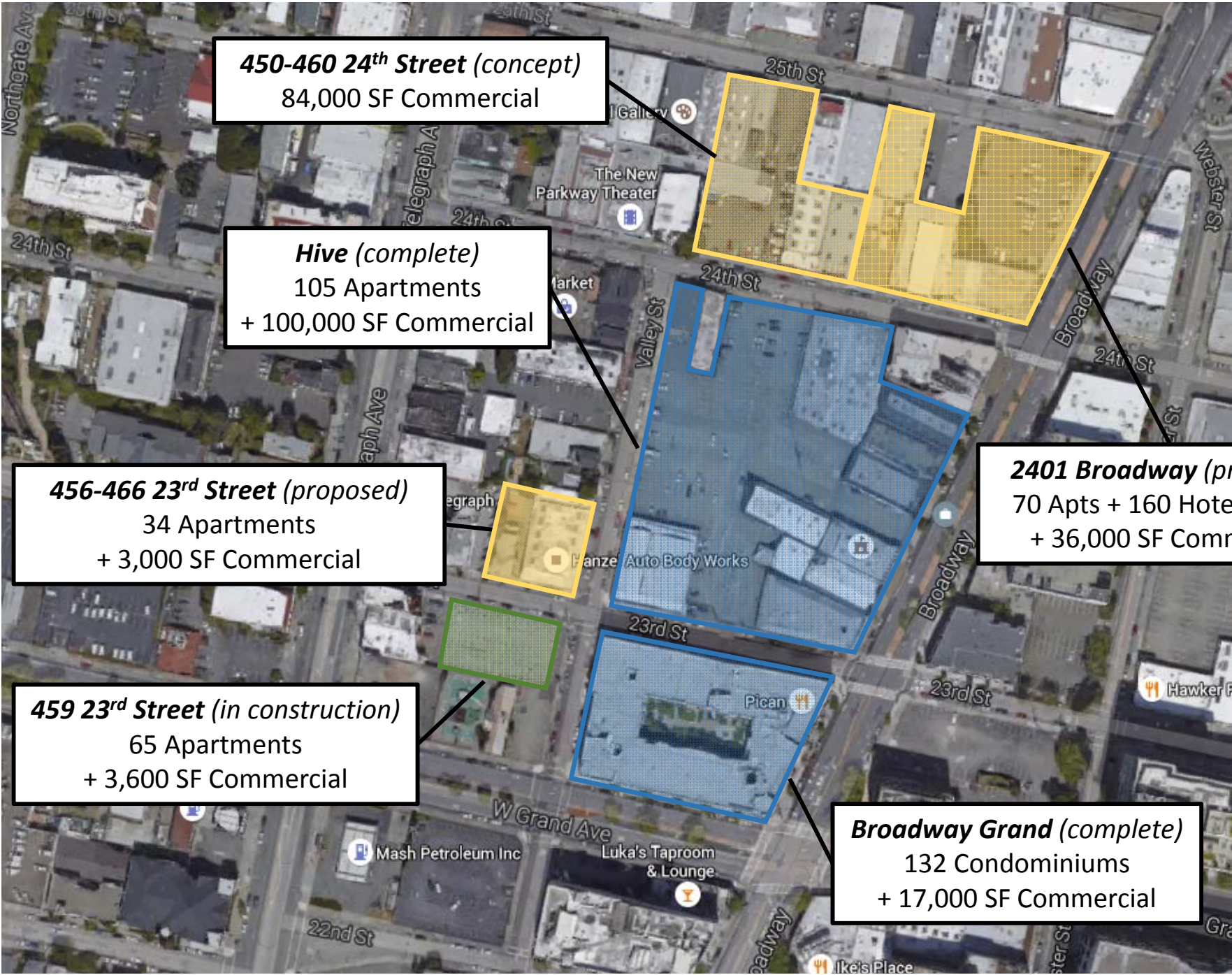
### *The Hive, Uptown*

- Redevelopment of a square block of vacant former auto showrooms into a mixed-use retail, office and residential destination
- 100,000 leased commercial space including Numi Tea, HUB Oakland and Drake's Dealership, Calavera, Firebrand
- 105 residential rental units



## *Oakland Project Profiles*





**450-460 24<sup>th</sup> Street (concept)**  
84,000 SF Commercial

**Hive (complete)**  
105 Apartments  
+ 100,000 SF Commercial

**456-466 23<sup>rd</sup> Street (proposed)**  
34 Apartments  
+ 3,000 SF Commercial

**459 23<sup>rd</sup> Street (in construction)**  
65 Apartments  
+ 3,600 SF Commercial

**2401 Broadway (proposed)**  
70 Apts + 160 Hotel Rooms  
+ 36,000 SF Commercial

**Broadway Grand (complete)**  
132 Condominiums  
+ 17,000 SF Commercial